



# GAT MONTHLY MEMBERSHIP PROGRESS REPORT

Results as of: 5/31/2023

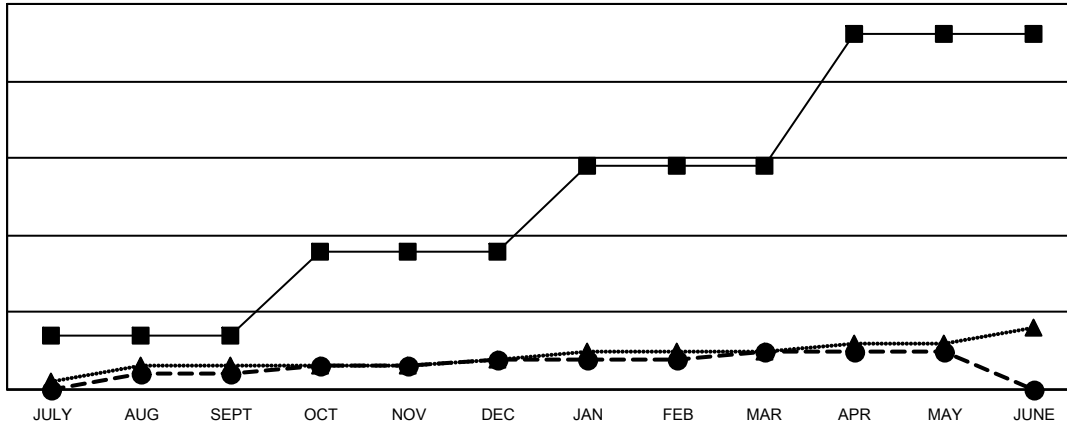
Multiple District 2

LOCATION: TEXAS

| Clubs                 |               |           |               |
|-----------------------|---------------|-----------|---------------|
| RESULTS FOR 2022-2023 |               |           |               |
| QUARTER               | NEW CLUB GOAL | NEW CLUBS | DROPPED CLUBS |
| JULY/AUG/SEPT         | 7             | 2         | 6             |
| OCT/NOV/DEC           | 11            | 2         | 9             |
| JAN/FEB/MAR           | 11            | 1         | 3             |
| APR/MAY/JUNE          | 17            | 0         | 2             |

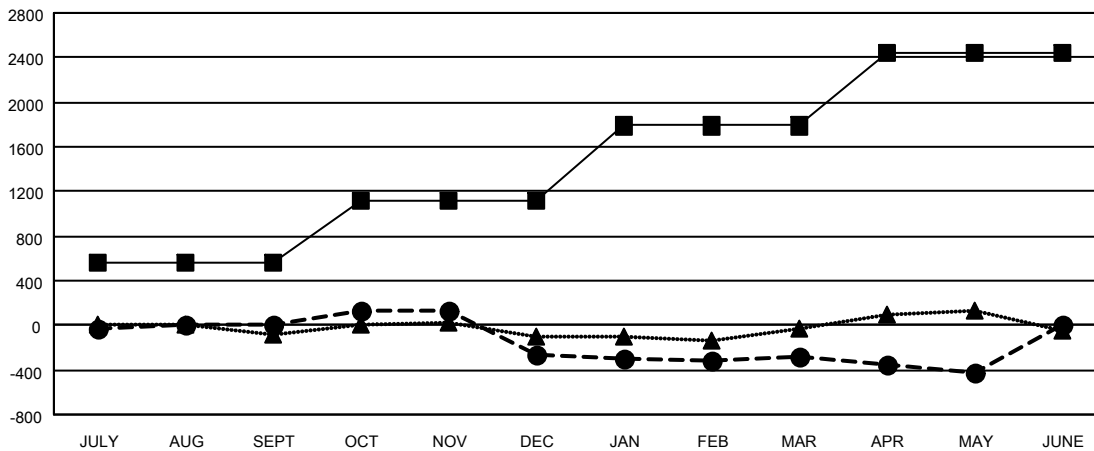
| Members               |                        |                      |  |
|-----------------------|------------------------|----------------------|--|
| RESULTS FOR 2022-2023 |                        |                      |  |
| QUARTER               | MEMBER GROWTH NET GOAL | MEMBER GROWTH ACTUAL | DROPPED MEMBERS ACTUAL (including transfers) |
| JULY/AUG/SEPT         | 559                    | 906                  | 784  |
| OCT/NOV/DEC           | 551                    | 726                  | 937  |
| JAN/FEB/MAR           | 679                    | 711                  | 663  |
| APR/MAY/JUNE          | 661                    | 498                  | 587  |

GOALS AND ACTUAL NEW CLUBS CUMULATIVE



- - CURRENT YEAR GOALS FOR NEW CLUBS
- - CURRENT YEAR ACTUAL NEW CLUBS
- ▲ - LAST YEAR ACTUAL NEW CLUBS

GOALS AND ACTUAL MEMBERS CUMULATIVE



- - MEMBER GROWTH NET GOAL
- - MEMBER GROWTH ACTUAL
- ▲ - LAST YEAR MEMBERSHIP ACTUAL

|                          |   |  |
|--------------------------|---|--|
| <b>DROPPED CLUBS: 20</b> | 487 CLUBS OF 780 ADDED 1 OR MORE NEW MEMBERS              | <b>GENDER DISTRIBUTION</b>             |
| <b>DROPPED MEMBERS</b>   | <a href="#">CLICK HERE FOR CUMULATIVE MEMBERSHIP DATA</a> | MALE 13,541 (61.04%)                   |
| DECEASED 272             |   | FEMALE 8,632 (38.91%)                  |
| CLUB CANCELLED 124       |   | NON BINARY 2 (0.01%)                   |
| OTHER 2,575              |   | PREFER NOT TO ANSWER 8 (0.04%)         |
| <b>TOTAL 2,971</b>       |   | <b>TOTAL FAMILY UNIT MEMBERS 3,483</b> |
|                          |   | FAMILY MEMBERS PAYING HALF DUES 1,782  |